

Day 9 (July 15, 2011)

Heronian Creatamus!

$$2 + 3i$$

square: $-5 + 12i$

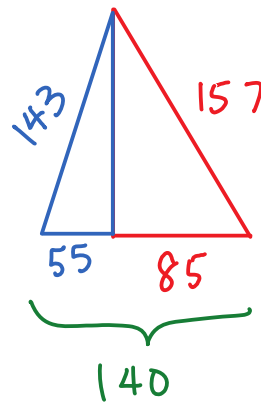
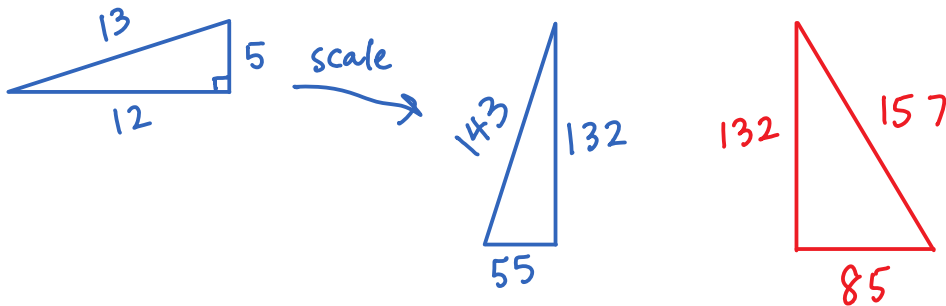
magnitude of square: 13

$$6 + 11i$$

square: $-85 + 132i$

magnitude of square: 157

Make a Heronian triangle using these right triangles.



$$\begin{aligned} \text{Area} &= \frac{1}{2} \cdot 140 \cdot 132 \\ &= 9060 \end{aligned}$$