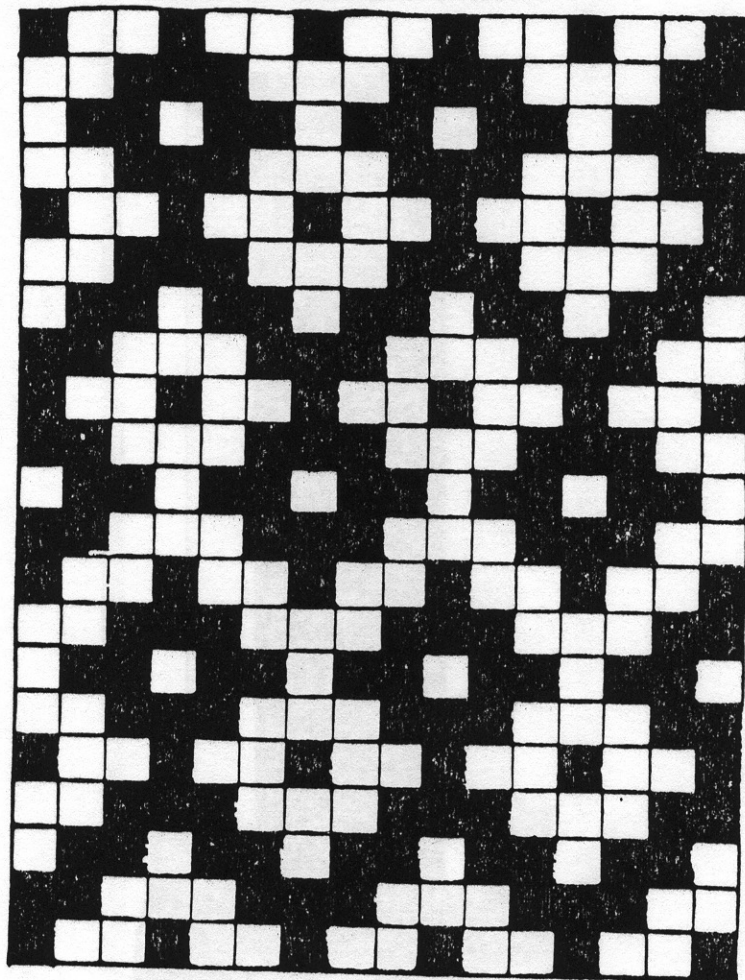


IS THE UNIT OF REPEAT A RECTANGLE OR A
SQUARE? OR BOTH? 1 UNIT OR 2 UNITS?

CAN YOU FIND THE SQUARE OR RECTANGLE
THAT IS THE UNIT OF REPEAT IN THIS DESIGN?



Design for a tile pavement. From a drawing by
Mirza Akbar in the Victoria and Albert Museum. Persian,
early 19th century.

TEACHING GEOMETRY THROUGH ART